

**WOODSIDE LIBRARY
CALIFORNIA NATIVE
PLANT GARDEN**

3140 Woodside Road Woodside, California

Established in 1970 and dedicated by the citizens of Woodside to the education and enjoyment of library patrons, students and visitors.

In 1970 the Woodside-Atherton Garden Club proposed creating a California Native Plant Garden in the area behind the Woodside library for the purpose of demonstrating the use of native plants in landscaping.

Jack Stafford, Woodside landscape architect, donated the plans for the garden. Woodside residents provided the financing for grading and building the paths and steps leading to the garden from the library terrace. Woodside-Atherton Garden Club members planted the garden.

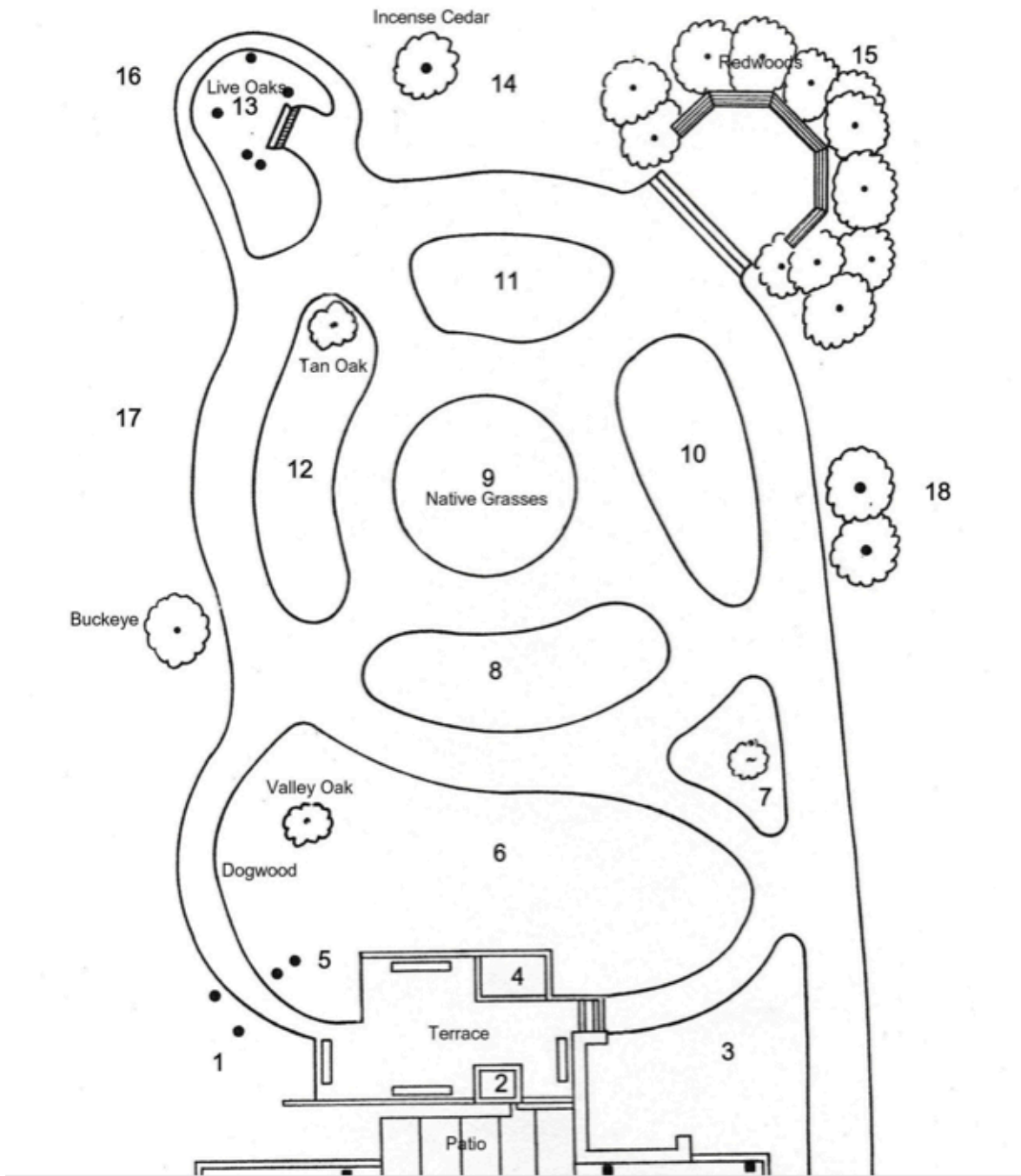
The garden was designed with a redwood grove, sunny meadow areas, an oak woodland area and a stream area for plants which require some water during the dry season. Recently the garden has been rejuvenated by Garden Club members under the guidance of landscape architect Ron Lutsko.

For a tour of the Garden Contact

The Woodside Library

(650) 851-0147

**Brochure prepared and printed by the Woodside-Atherton Garden Club
Member of the Garden Club of America www.woodsideathertongc.com**



This map shows the following plant communities in the garden:

- Redwood Forest
- Chaparral
- Grassland
- Oak Woodland
- Riparian Woodland

BED 1

AQUILEGIA formosa
 BETULA occidentalis
 CARPENTERIA californica
 PHILADELPHUS lewisii
 CORNUS sericea, C. sessilis
 ASARUM caudatum
 WOODWARDIA fimbriata
 OXALIS oregano
 THALICTRUM fendleri
 LOBELIA dunni
 MIMULUS cardinalis

BED 2

DUDLEYA pulverulenta
 LIMNANTHES douglasii
 MONARDELLA odorissima
 SEDUM oregano

BED 3

RAHMNUS tomentella
 AESCULUS californica
 BACCHARIS pilularis

BED 4

ACHILLEA millefolium
 ARTEMISIA pycnocephala
 SALVIA clevelandii 'Winnifred Gilman'

BED 5

DARMEIRA peltata
 SPIRAEA douglasii
 CORNUS sessilis
 POTENTILLA gracilis

BED 6

ARCTOSTAPHYLOS 'Radiant'
 ARCTOSTAPHYLOS 'Emerald Carpet'
 ARCTOSTAPHYLOS 'Howard McMinn'
 ARCTOSTAPHYLOS hookeri ssp.
 hearstiorum
 SALVIA sonomensis
 ARCTOSTAPHYLOS pajaroensis
 X Chiranthofremontia lenzii
 CEANOTHUS 'Yankee Point'
 DUDLEYA 'Frank Reinert'
 DUDLEYA cymosa
 ERIOGONUM arborescens
 QUERCUS lobata
 SEDUM spathulifolium 'Cape Blanco'

BED 7

RHUS integrifolia
 ERIOGONUM giganteum
 ERIOGONUM fasciculatum
 ADENOSTOMA fasciculatum (prostrate)
 ASCLEPIAS speciosa
 SALVIA 'Bee's Bliss'

BED 8

ARTEMISIA californica
 CEANOTHUS impressus 'Vandenberg'
 CEANOTHUS "Gloire de Versailles"
 EPILOBIUM (ZAUSCHNERIA) canum
 ERIGERON 'Wayne Roderick'
 ERIOGONUM grande var.rubescens
 ERIOGONUM umbellatum
 GRINDELIA hirsutula
 GRINDELIA angustifolia
 MIMULUS bifidus and hybrids
 OENOTHERA elata
 ROMNEYA coulteri
 VIOLA adunca
 VERBENA lilacina 'DeLaMina'

BED 9

GRASSES:
 CALAMOGROSTIS foliosa
 CAREX tumulicola
 FESTUCA idahoensis 'Siskiyou Blue'
 FESTUCA californica 'Olympali'
 FESTUCA californica
 KOELERIA macrantha
 MUHLENBERGIA rigens
 NASSELLA lepida
 SISYRINCHIUM bellum
 SOLIDAGO californica

BED 10

SALVIA clevelandii 'Allen Chickering'
 SALVIA clevelandii Winnifred Gilman'
 SALVIA clevelandii 'Whirly Blue'
 SALVIA clevelandii 'Pozo Blue'
 SALVIA apiana
 SALVIA spathacea
 SALVIA mellifera 'Terra Seca'
 LEPECHINIA calycina
 ASTER chilensis
 ERIOPHYLLUM lanatum
 ERIOPHYLLUM staechadifolium
 LEYMUS 'Canyon Prince'
 CEANOTHUS thyrsoflorus 'Tuxedo'

BED 11

CALAMAGROSTIS foliosa
 FREMONTODENDRON ssp. decumbens
 'Ken Taylor'
 MALOCOTHAMNUS fremontii
 CHILOPSIS linearis 'Purple Splendor'
 LINUM lewisii
 DESCHAMPSIA cespitosa
 ARCTOPHYLOS 'John Dourley'
 MUHLENBERGIA rigens
 EPILOBIUM 'Select Mattole'
 EPILOBIUM 'El Tigre'

BED 12

LITHOCARPUS densiflorus
 CORYLUS cornuta californica
 CARPENTERIA californica
 COMAROSTAPHYLIS diversifolia
 STYRAX redivivus
 IRIS douglasiana
 SISYRINCHIUM bellum
 SIDALCEA malvaeflora
 SALVIA leucophylla
 HOLODISCUS discolor
 PENSTEMON labrosus
 HETEROMELES arbutifolia
 SATUREJA mimuloides
 PENSTEMON heterophylus

BED 13

QUERCUS agrifolia
 CALYCANTHUS occidentalis
 IRIS douglasiana
 GARRYA elliptica 'James Roof'
 GALVEZIA speciosa
 PHYSOCARPUS capitatus
 ROSA californica
 MAIANTHEMUM dilatatum
 ACER circinatum 'Sunglow'

BED 14

ACER circinatum
 ACER circinatum 'Burgundy Jewel'
 ABIES bracteata
 CALOEDRUS decurrens
 CHLOROGALUM pomeridianum
 CORNUS nutallii
 FRAGARIA vesca
 POLYSTICHUM munitum
 IRIS innominata
 FESTUCA idahoensis 'Siskiyou Blue'

BED 15

SEQUOIA sempervirens
 WOODWARDIA fimbriata
 BLECHNUM spicant
 IRIS innominata
 CERCIS occidentalis

BED 16

ACER macrophyllum
 CORNUS 'Eddie's White Wonder'
 CORNUS nuttallii
 RHODODENDRON
 VACCINIUM ovatum
 SMILACINA stellata

BED 17

AESCULUS californica
 CORNUS 'Eddie's White Wonder'
 BERBERIS aquifolium
 HEUCHERA maxima
 HEUCHERA "Wendy"
 PHYSOCARPUS capitatus Prostrate
 Form
 RHAMNUS californica 'Mound San Bruno'
 SPIRAEA douglasii
 VANCOUVERIA hexandra
 RHODODENDRON occidentale
 RIBES aureum
 RIBES sanguineum

BED 18

MYRICA californica
 BERBERIS nevinii
 ARCTOSTAPHYLOS 'Sentinel'
 ARCTOSTAPHYLOS refugioensis
 ARCTOSTAPHYLOS glauca
 FREMONTODENDRON decumbens
 PRUNUS ilicifolia
 VITIS californica
 VITIS californica 'Roger's Red'

